

CATALYTIC PROJECTS SUMMARY FACT SHEET

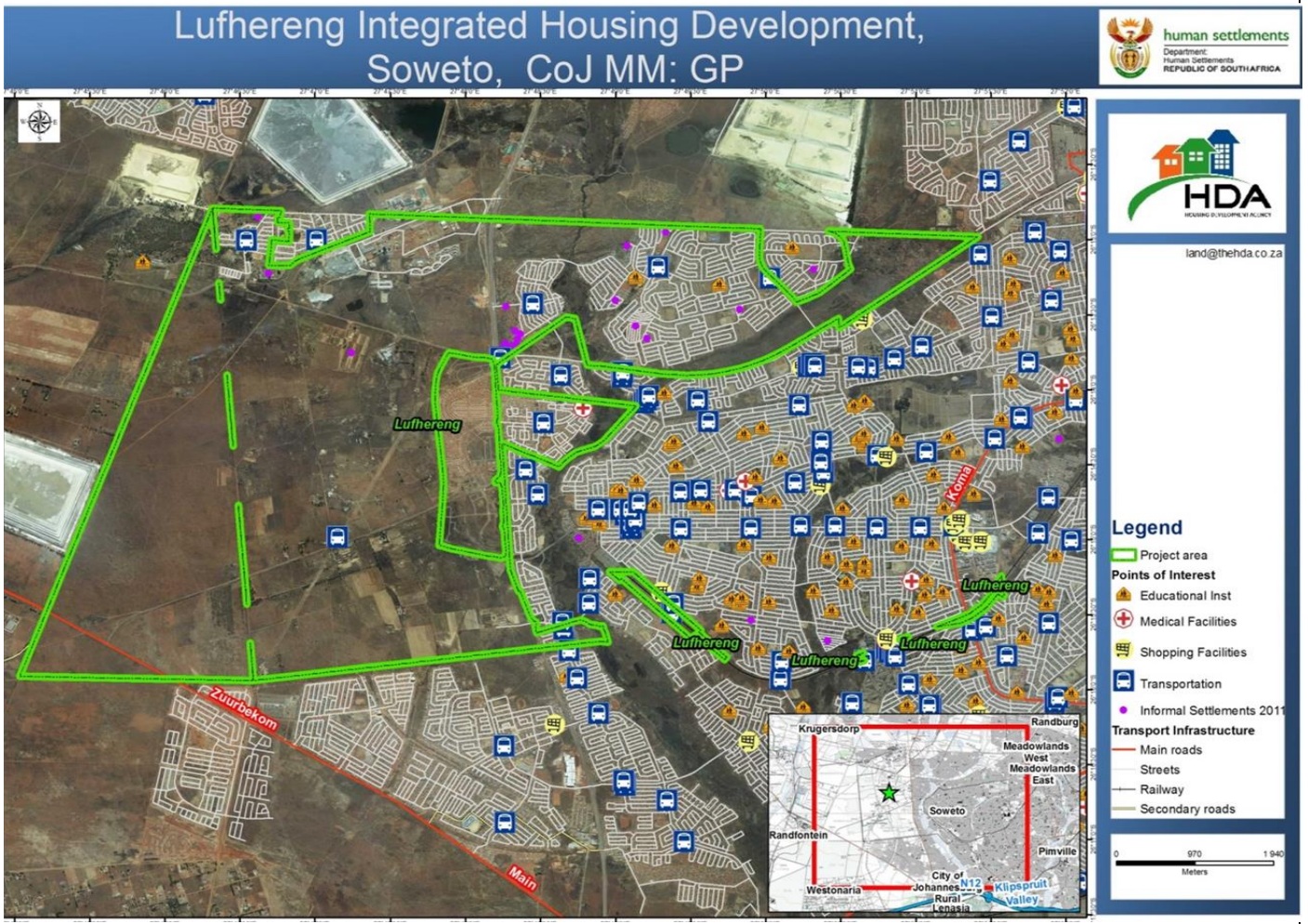


human settlements
Department:
Human Settlements
REPUBLIC OF SOUTH AFRICA



PROJECT NAME Lufhereng Integrated Housing Project

LOCALITY MAP



CATALYTIC PROJECTS SUMMARY FACT SHEET

PROJECT NAME	Lufhereng Integrated Housing Project	LAND CONDITION	Greenfield
DEVELOPER	City of Johannesburg & GDHS		
PROVINCE	Gauteng	MUNICIPALITY	City of Johannesburg MM
PROJECT DESCRIPTION	Lufhereng Project is designed as a natural extension of the greater Soweto and will have a regional impact as it is meant to comprise of 24 000 housing units made up of 50% fully subsidized housing, 30% FLISP/Gap units and 20% bonded units. The project will be delivered over 18 to 20 Phases and within 8 to 10yr delivery period. Lufhereng, together with Protea Glen, will be the single largest development zone for affordable bonded and FLISP housing in Gauteng.		
MAIN ECONOMIC DRIVER(S)	Proximity to an extensive urban area with established economy.		
DEVELOPMENT STATUS	The planning is complete and is currently under construction		
NUMBER OF HOUSING OPPORTUNITIES	24 145	PROJECT DURATION	6 years
PROPOSED ADJUSTED NO. OF HOUSING OPPORTUNITIES		PROPOSED ADJUSTED PROJECT DURATION	15 - 20 years
ESTIMATE PROJECT DEVELOPMENT COST	R6.2 billion	POTENTIAL JOB OPPORTUNITIES	15 000