

CATALYTIC PROJECTS SUMMARY FACT SHEET



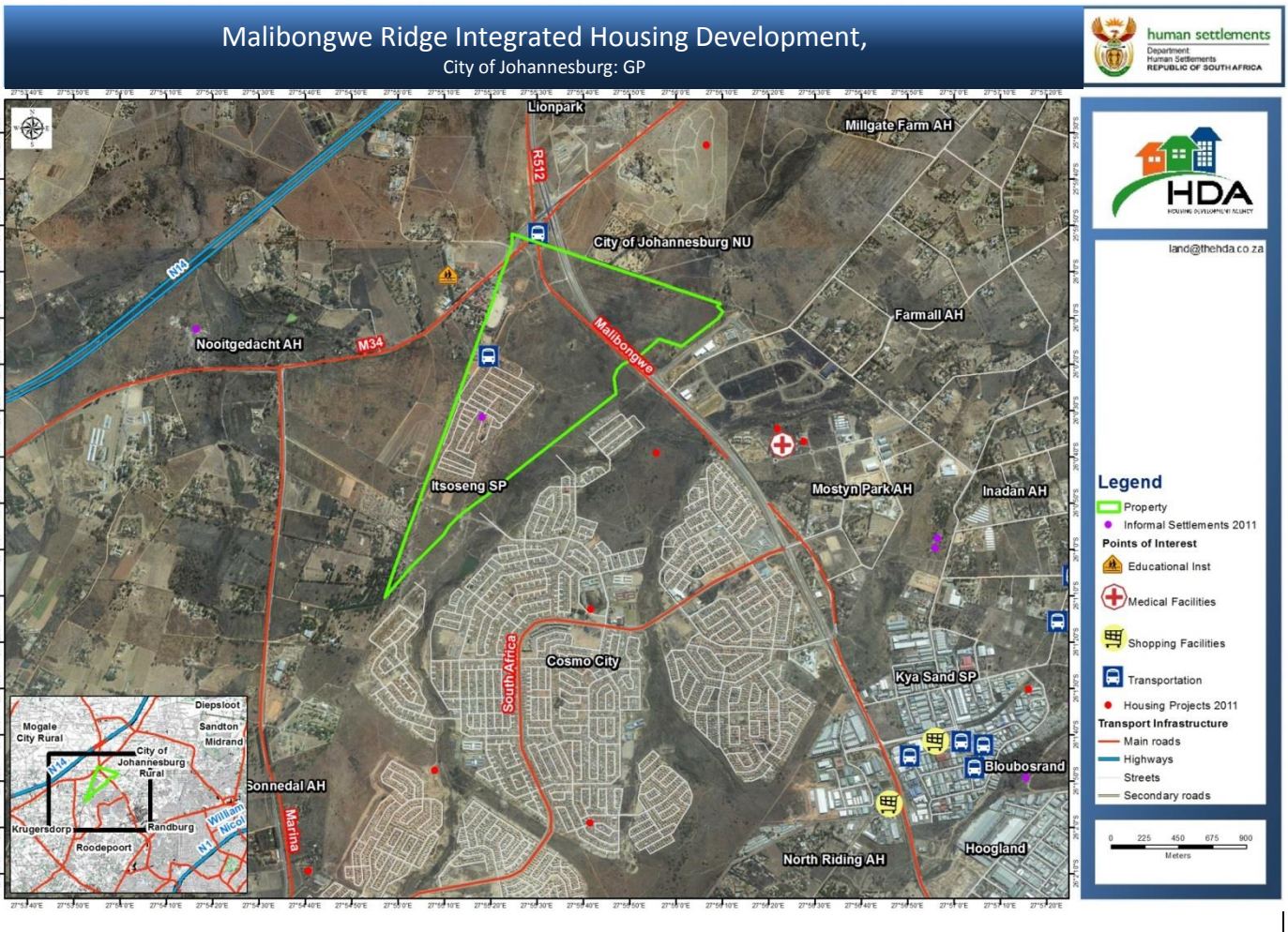
human settlements
Department:
Human Settlements
REPUBLIC OF SOUTH AFRICA



PROJECT NAME

Malibongwe Ridge Integrated Housing Development

LOCALITY MAP



CATALYTIC PROJECTS SUMMARY FACT SHEET			
PROJECT NAME	Malibongwe Ridge Integrated Housing Development	LAND CONDITION	Greenfield
DEVELOPER	City of Johannesburg MM and CODEVCO		
PROVINCE	Gauteng	MUNICIPALITY	City of Johannesburg MM
PROJECT DESCRIPTION	<ul style="list-style-type: none"> Malibongwe Ridge Development is a Priority Project for integrated human settlements developments that will not only reduce the housing backlog in the area, but will also address the vision to eradicate/address informal settlements by offering 5,514 housing opportunities on the 164ha site. It comprises 1324 fully subsidized units with 2186 formal backyard rental units, 646 FLISP, 464 bonded and 894 Social Housing opportunities. The project will accommodate and upgrade the Itsoseng Informal settlement that is occupying a part of the land. The project is implemented in 4 phases with Phase 1 and 2 in implementation stage. Construction of Phase 1 commenced in July 2012 with internal reticulation and in 2013 with top structures. Progress with Phase 2-4 is delayed by the Itsoseng informal occupants that need to be relocated to a transitional site by COJ. Handover of Phase 1 is constraint by budget limitations for construction of roads and storm water. 67% of the development is intended to be privately funded and 23% government funded. 		
MAIN ECONOMIC DRIVER(S)	Industrial and commercial activities in the nearby Kaya Sands and Lanseria Airport Precinct		
DEVELOPMENT STATUS	Project already under construction since July 2012		
NUMBER OF HOUSING OPPORTUNITIES	5 514	PROJECT DURATION	5 years
PROPOSED ADJUSTED NO. OF HOUSING OPPORTUNITIES	Same	PROPOSED ADJUSTED PROJECT DURATION	7 years
ESTIMATE PROJECT DEVELOPMENT COST	R2.6 billion	POTENTIAL JOB OPPORTUNITIES	6 336